



7 DAKINGS DRIFT  
HALESWORTH, IP19 8TQ





This two-bedroom terrace house is situated in the town centre of Halesworth, with off road parking and a garden, this is ideal for first time buyers or investors!

Upon entering the property you step into a useful entrance lobby. Continuing through into the sitting/dining room this room features stairs to the first floor, a window overlooking the front garden, and double doors providing access to the rear garden. The kitchen is fitted with a range of base and wall units, complemented by granite-effect work surfaces and tiled splashbacks. There is space for a cooker, as well as space and plumbing for a washing machine. Additional features include understairs storage, a wall-mounted gas boiler, and a window overlooking the rear garden.

On the first floor the landing provides access to both bedrooms and the bathroom. Bedroom one is a good sized double room with a window overlooking the front aspect and a built in wardrobe. Bedroom two is fitted with a Velux window and rear aspect views. The bathroom has a shower, toilet and basin and Velux window to the rear.

Outside, the property is approached via a concrete driveway providing off-road parking for two vehicles. To the rear, there is a charming, sheltered garden featuring a lawned area, mature beds and borders, a timber shed, a flagged seating area, and a gate offering rear access. The garden is fully enclosed by timber fencing.

**SERVICES** - Mains water, drainage and electricity are connected. Heating is provided for by way of gas fired central heating. (Durrants has not tested any apparatus, equipment, fittings or services and so cannot verify they are in working order).

**LOCAL AUTHORITY** – East Suffolk – B

**TENURE** - Freehold

**EPC** – C

**VIEWING** - Strictly by appointment with the agent's Halesworth office. Please call 01986 872 553.



2



1



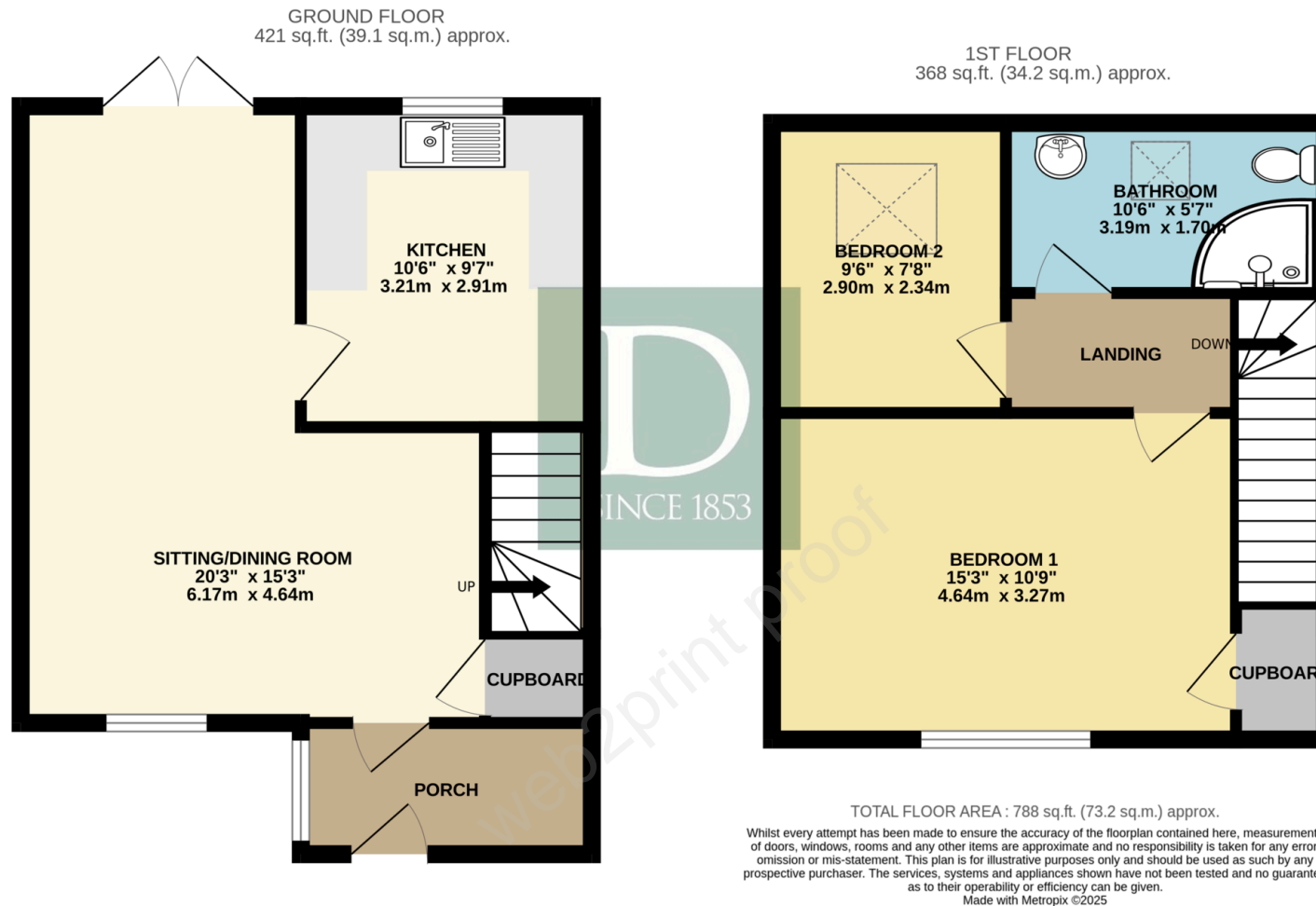
1







## FLOOR PLAN



Residential Agricultural Commercial On Site Auctions Property Management Building Consultancy Auction Rooms Holiday Cottages

## IMPORTANT NOTICE

### Durrants and their clients give notice that:

- 1.They are not authorised to make or give any representations or warranties in relation to the property either here or elsewhere, either on their own behalf or on behalf of their client or otherwise. They assume no responsibility for any statement that may be made in these particulars. These particulars do not form part of any offer or contract and must not be relied upon as statements or representations of fact.
- 2.Any areas, measurements or distances are approximate. The text, photographs and plans are for guidance only and are not necessarily comprehensive. It should not be assumed that the property has all necessary planning, building regulation or other consents. Durrants have not tested any services, equipment or facilities. Purchasers must satisfy themselves by inspection or otherwise.

## CONTACT US

Durrants, 12 Thoroughfare,  
Halesworth, Suffolk, IP19 8AH

Tel : **01986 872553**  
Email : **halesworth@durrants.com**